



SPECIFICATIONS

FinePix F770EXR	
Number of effective pixels*1	16.0 million pixels
Image sensor	1/2-inch EXR CMOS with primary color filter
Storage media	Internal memory (approx. 30MB) SD / SDHC / SDXC (UHS-I) memory card*2
File format	JPEG (Exif Ver 2.3**3), RAW (RAF format), RAW+JPEG, 3D still image; MPO compliant (Design rule for Camera File system compliant / DPOF-compatible)
(still image)	H.264 (MOV)
(movie)	
Number of recorded pixels	L : 4:3 4,608 × 3,456 L : 3:2 4,608 × 3,072 L : 16:9 4,608 × 2,592 M: 4:3 3,264 × 2,448 M: 3:2 3,264 × 2,176 M: 16:9 3,264 × 1,840 S: 4:3 2,304 × 1,728 S: 3:2 2,304 × 1,536 S: 16:9 1,920 × 1,080 Motion Panorama: 360° Vertical 11,520 × 1,624 Horizontal 11,520 × 1,080 180° Vertical 5,760 × 1,624 Horizontal 5,760 × 1,080 120° Vertical 3,840 × 1,624 Horizontal 3,840 × 1,080
Lens	Fujinon 20x optical zoom lens
Lens focal length	f=4.6 - 92mm, equivalent to 25 - 500mm on a 35mm camera
Lens full-aperture	F3.5 (Wide) – F5.3 (Telephoto)
Lens constitution	11 groups 14 lenses
Digital zoom	EXR Auto mode: Intelligent digital zoom approx. 2x (up to approx. 40x with 20x optical zoom) Other than EXR Auto mode: Intelligent digital zoom approx. 3.4x (up to approx. 68x with 20x optical zoom)
Aperture	F3.5 / F7.1 / F10 (Wide), F5.3 / F11 / F16 (Telephoto) with ND filter
Focus distance	Normal : Wide: Approx. 45cm/1.4 ft. to infinity Telephoto: Approx. 2.5m/8.2 ft. to infinity (from lens surface) Macro: Wide: Approx. 5cm - 3.0m / 1.9 in.- 9.8 ft. Telephoto: Approx. 1.3m - 3.0m / 4.2 ft. - 9.8 ft.
Sensitivity	Auto, Equivalent to ISO 100 / 200 / 400 / 800 / 1600 / 3200 / 6400* / 12800* (Standard Output Sensitivity) *ISO 6400: M mode or lower, ISO12800: S mode
Exposure control	TTL 256-zones metering, Multi, Spot, Average
Exposure mode	Programmed AE, Aperture-Priority AE, Shutter-Priority AE, Manual
Shooting modes	SP: Natural Light, Natural Light & with Flash, Portrait, Portrait enhancer, Dog, Cat, Landscape, Sport, Night, Night (Tripod), Fireworks, Sunset, Snow, Beach, Underwater, Party, Flower, Text
(MODE DIAL)	EXR, P, S, A, M, SP, Adv, AUTO
Image stabilizer	CMOS shift type
Face detection	Yes
Exposure compensation	-2.0EV – +2.0EV 1/3EV step
Shutter speed	Auto: 1/4 sec. to 1/2000 sec. All modes: 8 sec to 1/2000 sec
Continuous shooting (TOP)	Super High: approx. 11fps (Size M,S) High: approx. 8fps (Size L,M,S) Middle: approx. 5fps (Size L,M,S) Low: approx. 3fps (Size L,M,S)
(Best Frame Capture)	* SD memory card with a class 4 write speed (4 MB/sec.) or better is recommended. * The frame rate varies depending on the shooting conditions or numbers of frames in continuous shooting. L: 8 frames (3/5/8frames/sec.), M,S: 8/16 frames (3/5/8/11frames/sec.)
Auto bracketing	AE Bracketing: ±1/3EV, ±2/3EV, ±1EV Film Simulation Bracketing: PROVIA/STD, Velvia/VIVID, ASTIA/SOFT Dynamic Range Bracketing: 100% / 200% / 400%
Focus (mode)	Single AF / Continuous AF (EXR AUTO, Movie)
(type)	TTL contrast AF, AF assist illuminator available
(AF frame selection)	Center, Multi, Tracking
White balance	Automatic scene recognition Preset: Fine, Shade, Fluorescent light (Daylight), Fluorescent light (Warm White), Fluorescent light (Cool White), Incandescent light, Underwater, Custom
Self-timer	10 sec. / 2 sec. delay / Auto release / Auto release (Dog, Cat)
Flash	Auto flash (super i-flash) Effective range: (ISO AUTO) Wide: approx. 15 cm – 3.7 m/5.9in. – 12.1 ft. Telephoto: approx. 90 cm – 2.4m/2.9ft. – 7.8ft.
Flash modes	Red-eye removal OFF: Auto, Forced Flash, Suppressed Flash, Slow Synchro. Red-eye removal ON : Red-eye Reduction Auto, Red-eye Reduction & Forced Flash, Suppressed Flash, Red-eye Reduction & Slow Synchro.
LCD monitor	3.0-inch, approx. 460,000 dots, TFT color LCD monitor, approx.100% coverage
Movie recording	1,920x1,080pixels (30 frames/sec.) / 1,280x720pixels (30 frames/sec.) / 640x480pixels (30 frames/sec.) with stereo sound (Optical zoom function can be used)
Photography functions	EXR mode (EXR Auto/Resolution priority/High ISO & Low noise priority/Dynamic range priority), Face recognition, Face Detection, Auto red-eye removal, Film simulation, Auto release, Auto release(Dog,Cat), Framing guideline, Power management, Frame No. memory, Advanced mode (Motion panorama360, Pro focus, Pro low light,Multiple exposure, Individual shutter 3D) , High Speed Movie (80/160/320 frames/sec.), GPS Measurement, Advanced Anti Blur, Date stamp, Monitor Sunlight mode
Playback functions	Face Detection, Auto red-eye removal, Multi-frame playback (with micro thumbnail), Crop, Resize, Slide show, Image rotate, Voice memo, Exposure warning, Auto rotate playback, Photobook assist, Image search, Favorites, Mark for upload, Panorama, Erase selected frames, Photo Navigation, Histogram display
Other functions	Landmark Navigator, PictBridge, Exif Print, Print Image Matching II, 35 Languages, Time difference, Silent mode
Terminal (Video output)	NTSC / PAL selectable (with monaural sound)
(Digital interface)	USB 2.0 High-Speed
(HDMI output)	HDMI Mini connector
Power supply	NP-50A Li-ion battery (included) CP-50 with AC power adapter AC-5VX (sold separately)
Dimensions	105.1 (W) × 63.3(H) × 36.0 (D) mm / 4.1 (W) ×2.4(H) ×1.4 (D) in. (Minimum depth: 24.9mm / 0.9 in)
Weight	Approx. 234g / 8.2oz. (including battery and memory card) Approx. 213g/ 7.5oz. (excluding battery and memory card)
Operating temperature	0°C – 40 °C
Operating humidity	10 – 80% (no condensation)
Guide to the number of available frames for battery operation	approx. 300 frames (AUTO mode)

*1: Number of effective pixels: The number of pixels on the image sensor which receive input light through the optical lens, and which are effectively reflected in the final output data of the still image.
*2: Please see the Fujifilm website to check memory card compatibility. *3: Exif 2.3 is a digital camera file format that contains a variety of shooting information for optimal printing.

Sample photos in this catalog are simulated images.

Microsoft, Windows and Windows logo are trademarks, or registered trademarks of Microsoft Corporation in the United States and/or other countries.
Macintosh and Mac OS are trademarks of Apple Computer, Inc., registered in the U.S. and other countries.
SD logo is a trademark. All other trademarks are the property of their respective holders.

COLOR VARIATIONS



All Japanese place names courtesy of ZENRIN CO., LTD. All other place names courtesy of NAVTEQ.
This service uses POI (Points Of Interest) of ZENRIN CO., LTD.
"POWERED BY ZENRIN" is a trademark of ZENRIN CO., LTD.
©2010 ZENRIN CO., LTD. All rights reserved.
NAVTEQ maps™ is a trademark of NAVTEQ.
©2010 NAVTEQ All rights reserved.



Specifications are subject to change without notice.

For more information, please visit our website:

http://www.fujifilm.com/products/digital_cameras/index.html

FUJIFILM

FINEPIX F770EXR



16 Megapixel EXR CMOS Sensor | FUJINON 20x Optical Zoom (25mm-500mm) | High Speed Continuous Shooting | RAW / JPEG Format

FUJIFILM FINEPIX. More than you imagined.



The Premium Travel Zoom Camera - All You Dreamed of and More!

20x optical zoom performance plus Intelligent Digital Zoom for extreme 40x telephoto shots – all in the smallest long-zoom compact in the world.* Every control is at your fingertips. The EXR CMOS sensor for breathtaking image quality in low-light scenes, and the EXR Processor for lightning-fast auto focus. Introducing the FUJIFILM F770EXR, the perfect pocket-sized companion for your next journey overseas or just across town.

20x

FUJINON Optical Zoom Lens

40x

Intelligent Digital Zoom

Speed

High-speed AF, Continuous Shooting & More



* Among compact digital cameras equipped with a 20x optical zoom lens as of December 2011.

NEW FUJINON 20x Optical Zoom Lens Plus 40x Intelligent Digital Zoom

Zoom in on distant subjects with the extended 20x optical zoom. The improved Double Sliding Lens System lets you slip slim class-leading telephoto performance in your pocket. If 500mm optical zoom is not enough, Intelligent Digital Zoom is ready to double your telephoto power to 40x and capture dramatic shots with amazing sharpness and detail. In addition to high-precision aspheric lenses molded from extra-low dispersion glass and treatment with Super Electronic Beam Coating to minimize ghosting, flare and purple fringe, FUJIFILM F770EXR has improved image stabilization to prevent hand-shake blur even when shooting at 20x optical zoom or 40x digital zoom.



25mm Wide Angle

20x Optical Zoom

40x Intelligent Digital Zoom

Conventional digital camera

FinePix F770EXR

Intelligent Image Stabilization

Long telephoto shots magnify not only the subject, but also camera shake and subject movement, resulting in a blurry photo. Using CMOS Shift and High ISO image stabilization, FinePix F770EXR makes sure your shot is sharp and clear even at maximum 20x optical zoom or 40x Intelligent Digital zoom.

Faster So You Never Miss a Moment



High-Speed AF 0.16sec

In as little as 0.16 seconds, High Speed Contrast Detection AF ensures even a spur-of-the-moment shot at maximum 20x zoom is captured in sharp clarity.

High Speed Continuous Shooting

Capture action at almost 8 fps at full 16-megapixel resolution or shoot at 11 fps at 8-megapixel resolution.



NEW Fast Startup 1.5sec

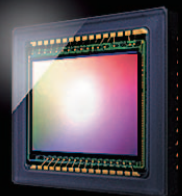
Turn the power ON from a cold start and FinePix F770EXR is ready to shoot in only 1.5 sec.

NEW Improved Response 0.8sec

From the quicker startup to a shorter shot-to-shot delay (minimum delay of only 0.8 sec.), the speedy sensor and processor deliver faster response so you never miss a shot.

NEW EXR Technology Trio Smarter, Faster and More Sensitive

Featuring FUJIFILM's original EXR Array and switchable sensor modes, the 16 Megapixel EXR CMOS sensor with its BSI (Back Side Illuminated) architecture captures exceptional image quality in every scene with extreme sensitivity, resolution and speed. Together with the high-precision FUJINON Lens and EXR Processor's high-speed processing, the groundbreaking sensor translates your creative vision into higher image quality than you imagined.



16-Megapixel
BSI EXR CMOS Sensor
Ultimate Low-light Image Quality



EXR Processor
High-Speed Startup,
Shooting & Processing



20x FUJINON Lens
High Resolution Across
the Extended Zoom Range



NEW EXR AUTO 103 Shooting Patterns with Motion Detection

The new EXR Auto with Motion Detection instantly recognizes 58 scene types, automatically optimizes every setting from exposure to white balance, and even switches to the ideal sensor mode: HR High Resolution for well-lit conditions, SN High Sensitivity/Low Noise mode for low light, and DR Dynamic Range mode for high-contrast scenes.



30% Less Noise!!*

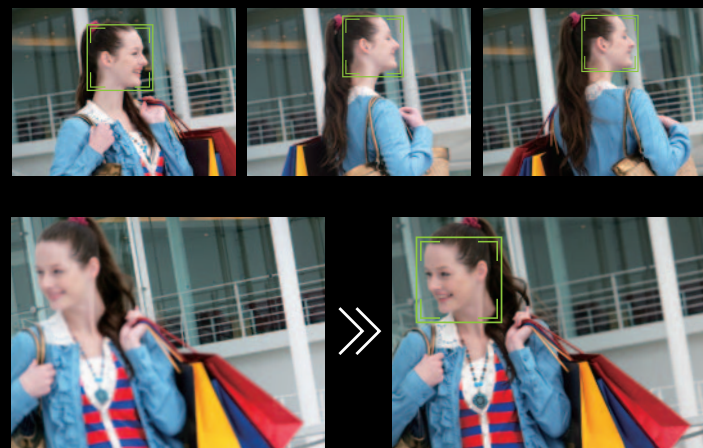
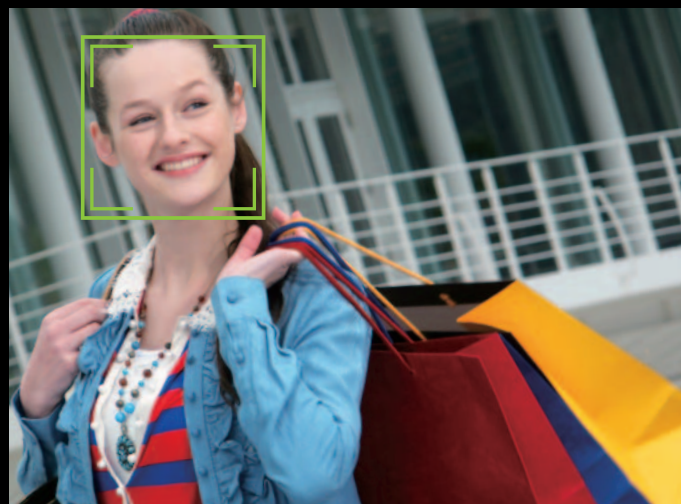
Stunning Stills in Low Light

30% less noise at ISO3200! The enhanced performance of the new EXR CMOS sensor lets you shoot dark scenes at high ISO sensitivity and capture them brighter, clearer and with less noise than ever before.

* When shooting at ISO3200.

NEW Face Tracking AF

Combining Face Detection with Tracking auto focus, the new Face Tracking AF uses the accelerated auto focus of FinePix F770EXR to find and lock onto the face of your subject without any manual setting. All you have to do is keep the subject in frame and later amaze friends and family with the crisply focused results.



Conventional digital camera

FinePix F770EXR

Photos with Face Tracking AF

Face Tracking AF keeps the subject in sharp focus, leaving you to free to concentrate on composition and finding the perfect shutter opportunity.

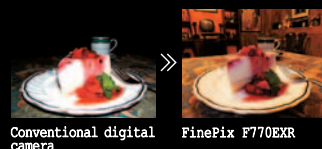


Full HD Movie with Face Tracking AF

Ideal for shooting movies of sports or capturing children at play, Face Tracking AF continues to track moving subjects even if the face temporarily turns away from the camera.

Super Intelligent Flash and Improved Flash Performance

Take flash photos – even macro shots – without flash washout. Smart flash control captures all subjects in clear detail over the improved flash range from 3.7m for wide angle shots to 2.4m when using the telephoto.



Conventional digital camera

FinePix F770EXR

Film Simulation

Give your photos the distinctive look of 5 classic film emulsions loved by professionals at the touch of a button.



■Mode:



PROVIA Standard Mode



Velvia Vivid Mode



ASTIA Soft Mode

Black & White Mode
Sepia Mode

Natural Light & with Flash

Taking full advantage of F770EXR's improved sensitivity and improved flash performance, Natural Light & with Flash takes two photos in quick succession, one with flash and one without. Later you can choose the best shot.



Without Flash

With Flash

Improved GPS Performance for More Memorable Moments!

Faster and more dependable satellite acquisition thanks to a new high sensitivity antenna. Record and edit your favorite places in the camera with the new MY Landmark function. These are just a few of the advanced GPS features that make FinePix F770EXR the ultimate travel compact.



Landmark Navigator Featuring Augmented Reality

Frame your shot in Landmark Navigator, and the direction and distance to nearby landmarks and other POI (Points of interest) indicated by icons are overlaid on the scene. Shift the direction and new landmark icons appear. Point the lens down and see a 1.5km radar view of landmarks.



Automatic Geo-tagging

Featuring an expanded POI database of approx. 1,000,000 places worldwide, the built-in GPS system records your location when you shoot.



Photo Navigation

Revisit your favorite spots! On-board GPS calculates and displays the distance from your present location to the place where a tagged photo was taken.



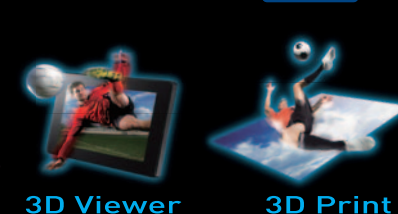
More Photo Fun After Shooting

Use a log file of GPS tags and Google Maps to plot your route on a PC running My FinePix Studio* and display Route View images. *included with the camera

NEW 3D Shooting with "Individual shutter 3D"

FUJIFILM brings high-quality 3D photography to compact cameras with an innovative 2-shot system. Just shoot the subject from one position, and then use the display overlay as a guide for taking the second shot from a different angle. FinePix F770EXR does the rest all in camera. You can view MPO format image data on a compatible PC, share your results as a 3D-Print, or display it on the 3D Digital Viewer FUJIFILM REAL 3D V3.

3D



3D Viewer

3D Print



3D TV



FinePix F770EXR

Conventional digital camera

Motion Panorama 360°

Featuring New Seamless Cylindrical View

Sweep the camera right-left or up-down to create immersive 360-degree panoramas.

