

Basic Owner's Manual
Digital Camera

Model No. **DMC-LZ30**



Please read these instructions carefully before using this product, and save this manual for future use.

More detailed instructions on the operation of this camera are contained in "Owner's Manual for advanced features (PDF format)" in the supplied CD-ROM. Install it on your PC to read it.



Register online at www.panasonic.com/register (U.S. customers only)

For USA and Puerto Rico assistance, please call: 1-800-211-PANA(7262) or, contact us via the web at: <http://www.panasonic.com/contactinfo>

Panasonic Consumer Marketing Company of North America,
Division of Panasonic Corporation of North America

One Panasonic Way, Secaucus, NJ 07094

© Panasonic Corporation 2013

Printed in China

VQT4V84
M0113KZ0



Dear Customer,
Thank you for choosing Panasonic!

You have purchased one of the most sophisticated and reliable products on the market today. Used properly, we're sure it will bring you and your family years of enjoyment. Please take time to fill in the information below. The serial number is on the tag located on the underside of your camera. Be sure to retain this manual as your convenient camera information source.

Date of Purchase	Dealer Phone No.
Dealer Purchased From	Model No.
Dealer Address	Serial No.

Please note that the actual controls and components, menu items, etc. of your Digital Camera may look somewhat different from those shown in the illustrations in this Owner's Manual.

Carefully observe copyright laws.

- Recording of pre-recorded tapes or discs or other published or broadcast material for purposes other than your own private use may infringe copyright laws. Even for the purpose of private use, recording of certain material may be restricted.

Information for Your Safety

WARNING:

- To reduce the risk of fire, electric shock or product damage,
- Do not expose this unit to rain, moisture, dripping or splashing.
- Use only the recommended accessories.
- Do not remove covers.
- Do not repair this unit by yourself. Refer servicing to qualified service personnel.

About the batteries

CAUTION

- Danger of explosion if battery is incorrectly replaced. Replace only with the type recommended by the manufacturer.
- When disposing the batteries, please contact your local authorities or dealer and ask for the correct method of disposal.

- Do not heat or expose to flame.
- Do not leave the battery(ies) in a car exposed to direct sunlight for a long period of time with doors and windows closed.

FCC Note:

This equipment has been tested and found to comply with the limits for a Class B digital device, pursuant to Part 15 of the FCC Rules. These limits are designed to provide reasonable protection against harmful interference in a residential installation. This equipment generates, uses, and can radiate radio frequency energy and, if not installed and used in accordance with the instructions, may cause harmful interference to radio communications. However, there is no guarantee that interference will not occur in a particular installation. If this equipment does cause harmful interference to radio or television reception, which can be determined by turning the equipment off and on, the user is encouraged to try to correct the interference by one or more of the following measures:

- Reorient or relocate the receiving antenna.
- Increase the separation between the equipment and receiver.
- Connect the equipment into an outlet on a circuit different from that to which the receiver is connected.
- Consult the dealer or an experienced radio/TV technician for help.

FCC Caution: To assure continued compliance, follow the attached installation instructions and use only shielded interface cables with ferrite core when connecting to computer or peripheral devices.

Any changes or modifications not expressly approved by the party responsible for compliance could void the user's authority to operate this equipment.

Declaration of Conformity

Trade Name: Panasonic
Model No.: DMC-LZ30
Responsible Party: Panasonic Corporation of North America
One Panasonic Way,
Secaucus, NJ 07094
Support Contact: Panasonic Consumer Marketing Company of North America
1-800-211-PANA (7262)

This device complies with Part 15 of the FCC Rules. Operation is subject to the following two conditions: (1) This device may not cause harmful interference, and (2) this device must accept any interference received, including interference that may cause undesired operation.



■ Cautions for Use

- Do not use any other AV cables except the supplied one.
- Do not use any other USB connection cables except the supplied one.

Keep this unit as far away as possible from electromagnetic equipment (such as microwave ovens, TVs, video games etc.).

- If you use this unit on top of or near a TV, the pictures and/or sound on this unit may be disrupted by electromagnetic wave radiation.
- Do not use this unit near cell phones because doing so may result in noise adversely affecting the pictures and/or sound.
- Recorded data may be damaged, or pictures may be distorted, by strong magnetic fields created by speakers or large motors.
- Electromagnetic wave radiation generated by microprocessors may adversely affect this unit, disturbing the pictures and/or sound.
- If this unit is adversely affected by electromagnetic equipment and stops functioning properly, turn this unit off and remove the battery. Then reinsert the battery and turn this unit on.

Do not use this unit near radio transmitters or high-voltage lines.

- If you record near radio transmitters or high-voltage lines, the recorded pictures and/or sound may be adversely affected.

-If you see this symbol-

Information on Disposal in other Countries outside the European Union
This symbol is only valid in the European Union. If you wish to discard this product, please contact your local authorities or dealer and ask for the correct method of disposal.

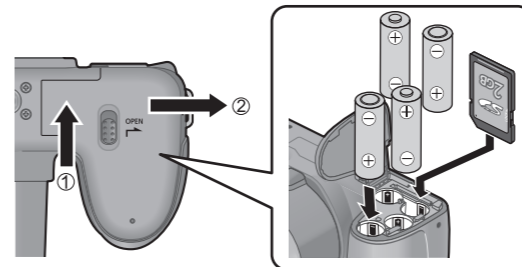
Standard accessories

Check that all the accessories are supplied before using the camera.

- Batteries**
• LR6/AA Alkaline batteries
- USB connection cable**
K1HY08YY0030
- AV cable**
K1HY08YY0029
- Shoulder strap**
VFC4903
- Lens Cap/ Lens Cap String**
VYQ8537
- CD-ROM***
VFF1174

Inserting the card (optional)/the batteries

1 Open the card/battery door



2 Insert the batteries or card

- Make sure that their orientation is correct.

■ Usable batteries

- LR6/AA Alkaline batteries
- HR6/AA Rechargeable Ni-MH (nickel metal hydride) batteries
- Do not use batteries other than those listed above.

■ Recording capacity guidelines

	Supplied batteries or optional Panasonic alkaline batteries	Fully-charged Panasonic Ni-MH batteries (optional, when the battery capacity is 1900 mAh)
Number of recordable pictures	Approx. 380 pictures	Approx. 540 pictures
Recording time	Approx. 190 min.	Approx. 270 min.
Playback time	Approx. 430 min.	Approx. 560 min.

Please note that the performance of alkaline batteries significantly decreases in low temperature conditions.

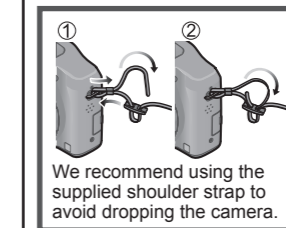
- Recording conditions by CIPA standard
- Keep the Memory Card out of reach of children to prevent swallowing.

Specifications Specifications are subject to change without notice.

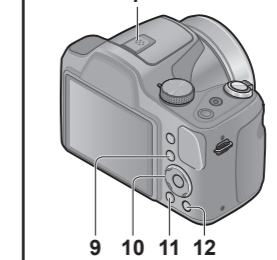
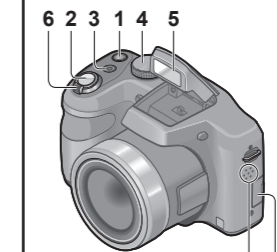
Power Source	DC 6 V LR6/AA Alkaline batteries (4) DC 4.8 V HR6/AA Rechargeable Ni-MH (nickel metal hydride) batteries (4)
Power Consumption	When recording: 1.5 W When playing back: 1.0 W
Camera effective pixels	16,100,000 pixels
Image sensor	1/2.3" CCD, total pixel number 16,400,000 pixels Primary color filter
Lens	Optical 35× zoom f=4.5 mm to 157.5 mm (35 mm film camera equivalent: 25 mm to 875 mm)/ F3.0 (Max. Wide) to F5.9 (Max. Tele)
Image Stabilizer	Optical method (Digital method is used when recording motion pictures.)
Focus range	P / M: 30 cm (0.98 feet) (Max. Wide) / 2 m (6.6 feet) (Max. Tele) to ∞ Macro / Intelligent Auto / Motion picture: 1 cm (0.033 feet) (Max. Wide) / 1.5 m (4.9 feet) (Max. Tele) to ∞
Shutter system	Electronic shutter + Mechanical shutter
Shutter speed	15 seconds to 1/2000th of a second
Exposure (AE)	Program AE (P) / Manual exposure (M) Exposure Compensation (1/3 EV Step, -3 EV to +3 EV)
Metering Mode	[Multi Metering] / [Center Weighted] / [Spot]

Names and Functions of Main Parts

The clock is not set when the camera is shipped. Set the date and time before using the camera.



We recommend using the supplied shoulder strap to avoid dropping the camera.



■ Taking pictures

1 Camera [ON/OFF] button
Use this to turn the camera on and off.

2 Shutter button (still pictures)
↓ Push 50% to focus (retain graphic)
↓ Push 100% to capture photo (retain graphic)

3 Motion picture button (motion pictures)
↓ Push 100% to start / end recording (retain graphic)

4 Mode dial
Use this to select the recording mode.

5 Flash

6 Zoom lever

7 Microphone

8 Speaker
• Do not cover the speaker with your fingers.

■ Viewing your pictures

9 Playback button
① Press the Playback button
② Press ◀▶ to select the picture
• Press [] to delete the displayed picture.

10 Cursor button

11 [DISP.] button

12 [Q.MENU] / [] (Delete) / [] (Cancel) button

13 [AV OUT/DIGITAL] socket

LCD monitor	3.0" TFT LCD (4:3) (Approx. 460,800 dots) (field of view ratio about 100%)
Flash	Flash range: (ISO AUTO) Approx. 0.6 m (2.0 feet) to 10 m (33 feet) (Max. Wide)
Microphone/ Speaker	Monaural
Recording media	Built-in Memory (Approx. 100 MB) / SD Memory Card / SDHC Memory Card / SDXC Memory Card
Recording file format	JPEG (based on Design rule for Camera File system, based on Exif 2.3 standard) (still picture) QuickTime Motion JPEG (motion pictures with audio)
Interface	Digital USB 2.0 (High Speed) Analog video NTSC Composite Audio Audio line output (Monaural)
Terminal	AV OUT/DIGITAL: Dedicated jack (8 pin)
Dimensions	Approx. 123.8 mm (W) × 83.7 mm (H) × 91.4 mm (D) [4.87" (W) × 3.30" (H) × 3.60" (D)] (excluding the projection part)
Mass (Weight)	With card and batteries: Approx. 558 g (1.23 lb) Excluding card and batteries: Approx. 465 g (1.03 lb)
Operating temperature	0 °C to 40 °C (32 °F to 104 °F) (Operating humidity: 10%RH to 80%RH)
Language select	[ENGLISH] / [ESPAÑOL]