

**Canon**

EOS  
**REBEL**



IMAGE.

INCREDIBLE.

PERFORMANCE.



Actual size

## EOS REBEL T5i

18.0 MEGA  
PIXELS  
CMOS



FULL HD  
1080

ISO  
12800  
6400

Up to  
5.0  
Frames  
Per Sec

Vari angle LCD

Hybrid  
CMOS AF

### Renew Your Creative Soul

Canon's flagship Rebel, the EOS Rebel T5i camera, is a sophisticated full-featured powerhouse that delivers fast performance – all packed in an ergonomic, stylish body that's ready for anything. With a brilliant Vari-angle Touch Screen 3.0" Clear View LCD monitor II and a phenomenal state-of-the-art AF system, it's the perfect camera to unleash your creativity every time you pick it up.



# The World's Smallest and Lightest Digital SLR Camera\*

IMAGE.



COMPACT.



Approx. 25%  
Smaller and  
Lighter than the  
EOS Rebel T5i\*\*

Actual size

**EOS**  
**REBEL SL1**

18.0 MEGA  
PIXELS  
CMOS

DIGIC  
5

FULL HD  
1080

ISO  
12800  
6400

UP TO  
4.0  
Frames  
Per Sec

Hybrid  
CMOS  
AF II

Scene  
Intelligent Auto

9-point  
AF

## Small Size, Big Possibilities

The new EOS Rebel SL1 camera is the world's smallest and lightest digital SLR camera\*. But don't let its size fool you; this camera has enormous performance with a highly receptive sensor and proven EOS features that let you capture incredible images – images hard to capture with a smartphone. It's an amazing camera you can carry all day long to ignite your imagination.

\* Among digital SLR cameras which use APS-C size equivalent sensors. As of March 1, 2013, based on Canon's research. \*\* See complete dimensions and weight on page 19.

# IMAGE INCREDIBLE

Both the EOS Rebel T5i and EOS Rebel SL1 cameras feature Canon's digital trinity: a Canon 18.0 Megapixel CMOS (APS-C size) sensor; Canon's incredible DIGIC 5 Image Processor; and compatibility with the entire line of Canon's amazing collection of EF and EF-S lenses. When you carry an EOS Rebel camera and a Canon lens, stunning results are at your fingertips every time, no matter the light, no matter the situation.

**18.0** MEGA  
PIXELS  
CMOS



EOS Rebel T5i

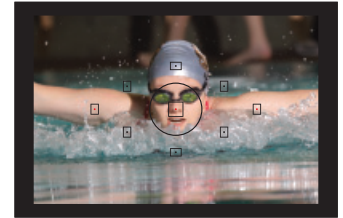
EOS Rebel SL1





The EOS Rebel T5i and EOS Rebel SL1 cameras feature many of Canon's most advanced technologies to help ensure lightning fast performance – intuitively and easily. Simply put, EOS Rebel cameras are designed to be ready when you are.

# INCREDIBLE SPEED



## 9-point Autofocus System

The EOS Rebel SL1 camera features a wide area 9-point AF system with a cross-type center point, while the EOS Rebel T5i camera's wide area 9-point AF system features all cross-type points including a dual-cross center point, delivering faster, more accurate autofocus. An AI Servo AF system achieves and maintains consistent focus of moving subjects.



## Continuous Shooting

Both the EOS Rebel T5i and EOS Rebel SL1 cameras are designed to capture the action, capable of shooting up to 5.0 and up to 4.0 fps, respectively.

## High ISO Range (ISO 100–12800)

For shooting in dimly lit situations previously difficult without flash, the EOS Rebel T5i and EOS Rebel SL1 cameras have an extensive ISO range of 100–12800 – expandable up to 25600 – for excellent capture in almost any light.





HD video captured on a Canon EOS Rebel SLR camera with a Canon lens brings all the advantages of SLR photography to the moving image. With the EOS Rebel T5i and EOS Rebel SL1 cameras, stunning movies are at your fingertips.

# INCREDIBLE HD MOVIES



## Full HD Video

Along with all the advantages of SLR moviemaking, the EOS Rebel T5i and EOS Rebel SL1 cameras add some significant new technologies to make HD movie capture smoother, faster and easier. The Movie Servo AF feature helps ensure sharp focus even during unpredictable movement, and works in concert with a number of Canon's STM lenses (including the bundled EF-S 18-55mm f/3.5-5.6 IS STM) to deliver smooth and quiet continuous autofocus every time. Canon's Hybrid CMOS AF and Hybrid CMOS AF II help increase focus speeds during Live View.





Designed to perform where, when and how you want them to.

# VERSATILITY AT HAND



EOS Rebel SL1

The World's Smallest and Lightest Digital SLR Camera\*

## Small & Lightweight

Both the EOS Rebel T5i and EOS Rebel SL1 cameras are designed to be comfortable tools to carry and use all day long. Lightweight and small (the EOS Rebel SL1 is the world's smallest and lightest digital SLR camera\*, weighing only 13.06 oz.\*\*; the EOS Rebel T5i is 18.5 oz.\*\*), they are nonetheless fully featured, no-compromise cameras, designed with controls that are easy to use and intuitive in the hands of every photographer.

\* Among digital SLR cameras which use APS-C size equivalent sensors. As of March 1, 2013, based on Canon's research.

\*\* Weight specifications and dimensions are for camera body only; does not include battery or memory card. See complete dimensions and weight on page 19.



EOS Rebel T5i



## Vari-angle LCD

Perfect for composing images from any position, the EOS Rebel T5i camera's Vari-angle Touch Screen LCD monitor tilts forward 180°, backwards 90°, and 175° sideways. It's perfect for shooting from low and high angles, handheld or on a tripod. With the Clear View LCD monitor's advanced construction and smudge resistant coating, reflections are reduced for easy viewing, anywhere.



Quick control right at your fingertips!

## Touch Screen & Multi-touch Operation

Using similar capacitive touch screen technology to today's popular mobile devices, the EOS Rebel T5i and EOS Rebel SL1 cameras' brilliant LCD monitors are touch-sensitive, delivering intuitive operation with ease. Two-finger touch gestures can be used for zooming or changing images. Menu and quick control settings can be accessed, and focus point and shutter release can be activated with a tap.



## Viewfinder

In addition to their amazing multi-touch screens, the EOS Rebel T5i and EOS Rebel SL1 cameras also sport optical viewfinders, ideal for shooting in bright conditions or capturing the moment as it unfolds. The viewfinder displays exposure, AF, flash, plus other relevant image information along with the image.



Simple to use, with plenty of creative options, EOS Rebel cameras make some of the finest photographs and movies, every day.

# CAPTURE IT SIMPLY



©2013 Sandy Puc\*

## Mode Dial

Located on the top of both the EOS Rebel T5i and EOS Rebel SL1 cameras is the Mode Dial. With the Mode Dial, it's simple to select the shooting mode that's perfectly suited to the shot at hand: Scene Intelligent Auto for when you don't want to have to worry about settings, Creative Zone Mode when you're confident enough to make manual settings, Basic Zone Mode when you find yourself shooting a certain type of shot, or want to capture a specific scene with Special Scene Mode. It all happens from the Mode Dial.



## Scene Intelligent Auto

Be certain your special moments are captured with precisely the right settings. The camera automatically analyzes the image, taking into account faces, colors, brightness, movement and contrast. It then applies the most appropriate enhancing features to help deliver maximum impact.



## Creative Zone Mode

Imagine the possibilities. Then take creative control. Choose from Program (P), Aperture Priority (Av), Shutter Priority (Tv) and Manual (M), and the camera becomes a personalized, highly creative tool where you call the shots. Control the variables that lead to a memorable photograph.



Sports



## Basic Zone Mode

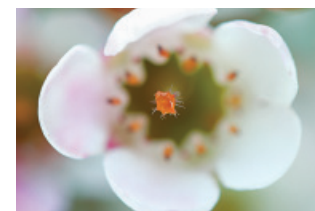
Keep your focus on the scene at hand. Simply choose a mode and the camera takes care of the details. Exposure, shutter speed and flash are all ideally set for superb image quality when you shoot.



Portrait



Landscape



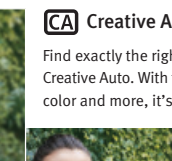
Close-up



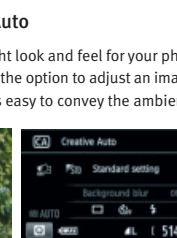
Flash Off



Background: Blurred



Background: Sharp



Creative Auto setting screen



Handheld Night Scene



## Special Scene Mode

Expanding on basic shooting modes, Special Scene Modes help you handle difficult shooting situations such as fast action or low light. Simply select from a number of preset options and you can capture beautiful, detailed photos.



Night Portrait



HDR Backlight Control



Candlelight (EOS Rebel SL1 only)



Food (EOS Rebel SL1 only)



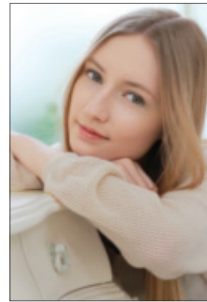
Kids (EOS Rebel SL1 only)





**Creative Filters**

The EOS Rebel T5i and EOS Rebel SL1 cameras have seven different creative filters, including Art Bold, Water Painting, Miniature, Fisheye, Grainy B/W, Soft Focus and Toy Camera effects. Each effect can be applied in three different levels, and easily previewed in Live View. Miniature Effect can even be applied to movies on the EOS Rebel SL1 model.



Art Bold

Soft Focus



Toy Camera

With Creative Filters built right in, the EOS Rebel T5i and EOS Rebel SL1 cameras can take a simple image and easily turn it into a spectacular photo.

# SPECTACULAR CREATIVITY



Preview Creative Filters in Live View!



Grainy B/W



Fisheye



Miniature

Both the EOS Rebel T5i and EOS Rebel SL1 cameras are capable of working seamlessly with compatible printers to produce high quality prints. In Direct Print mode, users can crop their images, taking advantage of the camera's 18.0 Megapixel CMOS sensor's high resolution, or change the aspect ratio of their image – all without the need for a computer. Working directly with Canon's expansive collection of PIXMA printers, the EOS Rebel T5i and EOS Rebel SL1 cameras can print tremendous prints with ease, all pertinent settings passing on to the printer for the right print – the first time.



# LASTING MEMORIES



©2013 Sandy Puc'



# INCREDIBLE EOS SYSTEM

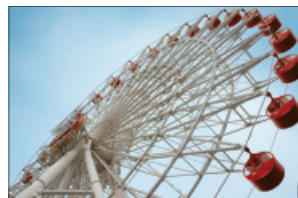


## EF and EF-S Lenses

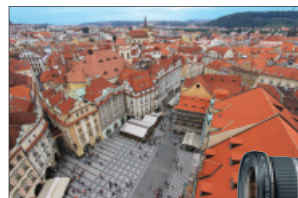
The EOS Rebel T5i and EOS Rebel SL1 cameras are available bundled with a Canon STM lens – the new EF-S 18–55mm f/3.5–5.6 IS STM. It is optimized for video shooting and complements the cameras' features with its own stepping motor for smooth and quiet continuous AF. But it doesn't stop there. These cameras are also compatible with the EOS System's incredible line of optics, ranging from ultra-wide angle to super-telephoto, plus specialty lenses, which use advanced optics and precision engineering for outstanding performance and phenomenal results. Canon's Optical Image Stabilizer technology helps minimize the effect of camera shake, effectively adding up to four stops of light. With lenses suitable for almost anything, photographers can truly maximize the performance of their EOS Rebel cameras.



EF-S 18–135mm f/3.5–5.6 IS STM



EF 40mm f/2.8 STM



EF-S 10–22mm f/3.5–4.5 USM



EF-S 60mm f/2.8 Macro USM

**EF80 million**



## Canon Speedlite Flashes

While both the EOS Rebel T5i and EOS Rebel SL1 cameras feature built-in flash, they are also compatible with Canon's full line of Speedlite flashes, like the powerful Speedlite 320EX and the compact and lightweight Speedlite 270EX II, both of which add power and flexibility on the go.



## GPS Receiver\*

Handy for travel photography, the EOS Rebel T5i and EOS Rebel SL1 cameras are compatible with the optional GPS Receiver GP-E2. With the GPS receiver attached, the cameras can record location, including latitude, longitude and altitude, plus track the trajectory of movement and more with their logging function.



\* In certain countries and regions, the use of GPS may be restricted. Therefore be sure to use GPS in accordance with the laws and regulations of your country or region. Be particularly careful when traveling outside your home country. As a signal is received from GPS satellites, take sufficient measures when using in locations where the use of electronics is regulated.

## Specifications

	EOS REBEL T5i	EOS REBEL SL1
Image Size	18.0 Megapixel CMOS (APS-C) Sensor	
Imaging Processor	DIGIC 5 Image Processor	
ISO Speeds	Still: 100–12800 (Expandable to 25600), Video: 100–6400 (Expandable to 12800)	
Video Recording	EOS Full HD Movie Mode 1920 x 1080: 30p (29.97) / 24p (23.976) / 25p, 1280 x 720: 60p (59.94) / 50p, 640 x 480: 30p (29.97) / 25p	
Continuous Shooting Speed	Up to 5.0 fps	Up to 4.0 fps
Max. Number of Burst Shots <sup>†</sup> (JPEG/RAW)	22 / 6	28 / 7
AF System	9-point all cross-type AF System with dual-cross center point	9-point AF System with cross-type center point
Contrast AF	Hybrid CMOS AF	Hybrid CMOS AF II
Viewfinder Coverage	Approx. 95% with 0.85x magnification	Approx. 95% with 0.87x magnification
Vari-angle LCD	Yes	–
Touch Screen LCD	Yes	
Built-in Microphone	Yes; Stereo	Yes; Monaural
Creative Filters	7 (Real-time viewing possible)	7; Miniature Effect also applicable for movies (Real-time viewing possible)
Special Scene Modes	3 (Handheld Night Scene/HDR Backlight Control/Night Portrait)	6 (Handheld Night Scene/HDR Backlight Control/Night Portrait/Kids/Food/Candlelight)
Built-in Flash	Yes	
Dimensions	Approx. 5.2 x 3.9 x 3.1 inches	Approx. 4.60 x 3.57 x 2.74 inches
Weight (Body only / CIPA Standard <sup>††</sup> )	Approx. 18.5 oz. / Approx. 20.5 oz.	Approx. 13.06 oz. / Approx. 14.36 oz.

<sup>†</sup> With an 8GB card, based on Canon's testing standards. <sup>††</sup> Including battery and memory card.





**Featured Photographer:**  
**Sandy Puc'** *Canon USA Explorer of Light*

Sandy Puc', of Sandy Puc' Photography in Littleton, Colorado, is a nationally acclaimed photographer and business-woman who lectures internationally, and is a frequent contributor to magazines and print journals.

**Canon**



See what's new on a daily basis, and more.  
[facebook.com/CanonUSA](https://facebook.com/CanonUSA)



Stay up to date on the latest videos from Canon.  
[youtube.com/CanonUSA](https://youtube.com/CanonUSA)



Follow us for news, product launches, events and more.  
[twitter.com/CanonUSAimaging](https://twitter.com/CanonUSAimaging)

Certain images and effects simulated. Specifications and availability are subject to change without notice. Weight and dimensions are approximate. Not responsible for typographical errors.

©2013 Canon U.S.A., Inc. All rights reserved. Canon, DIGIC, the DIGIC logo, EOS, EOS Rebel and PIXMA are registered trademarks of Canon Inc. in the United States and may also be registered trademarks or trademarks in other countries. Facebook is a trademark of Facebook Inc. Twitter is a registered trademark of Twitter, Inc. YouTube is a trademark of Google Inc. All other product and brand names are trademarks, or service marks of their respective owners.

Canon makes no representations or warranties with respect to any third party accessory or product mentioned herein.

Use of genuine Canon accessories is recommended; these products are designed to perform optimally when used with genuine Canon accessories.

Warning: Unauthorized recording of copyrighted materials may infringe on the rights of copyright owners and be contrary to copyright laws.

[usa.canon.com/eos](https://usa.canon.com/eos)

1-800-OK-CANON

Canon U.S.A., Inc.  
One Canon Park  
Melville, NY 11747 U.S.A.

Canon Canada, Inc.  
6390 Dixie Road  
Mississauga, Ontario L5T 1P7 Canada

Canon Latin America, Inc.  
703 Waterford Way, Suite 400  
Miami, FL 33126 U.S.A.

Canon Mexicana, S. de R.L. de C.V.  
Bld. Manuel Ávila Camacho No. 138, Piso 17  
Col. Lomas de Chapultepec  
C.P. 11000 México, D.F. México

0174W968 4/13

PRINTED IN U.S.A.